

Super easy maxi-dress!

This My Image inspired multi-way dress provides you with 5 different styles. I saw the dress in a magazine and thought, why didn't I come up with this myself? It's basically two rectangles sewed together. I added a split and replaced the satin ribbon by a handmade one.



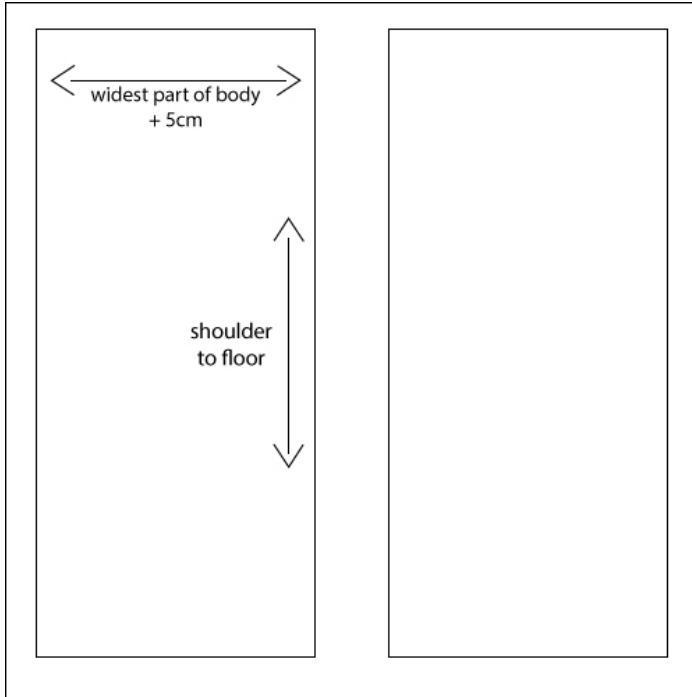
Materials needed:

1. 1.50m Jersey, Lycra or other stretchy fabric.
2. 10cm of matching fabric (min. 140 wide) for the ribbon or a pre-fab ribbon if you're lazy ;)
3. Thread
4. Pins
5. Jersey sewing machine needles.

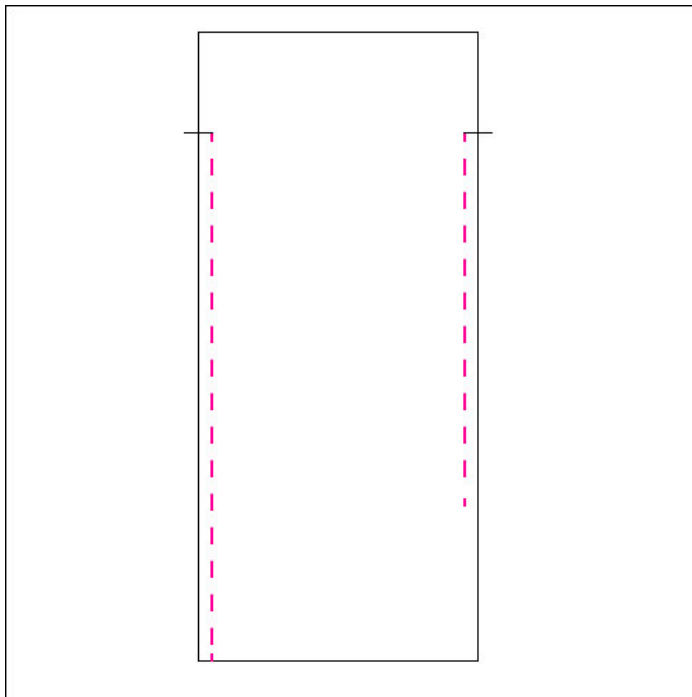


Instructions:

1. Cut two identical rectangles:

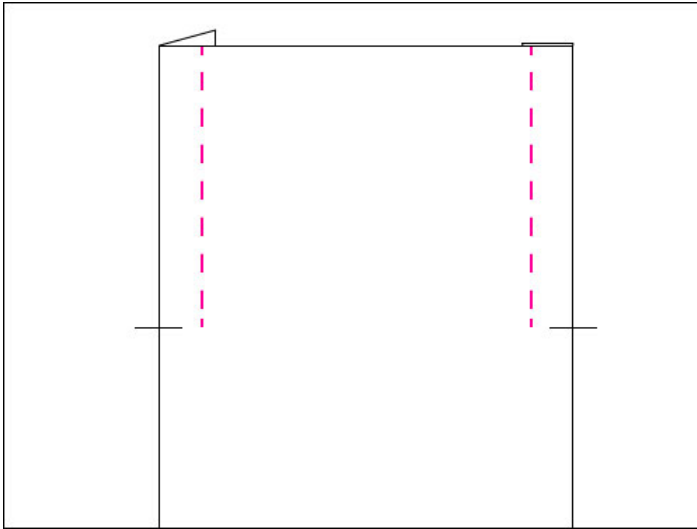


2. Pin the front panel to the back panel with the right sides together.
3. Stitch both sides. Leave 30 cm at the top unstitched, this is for the armholes. At the left bottom, leave 45 cm unstitched, this is for the split.

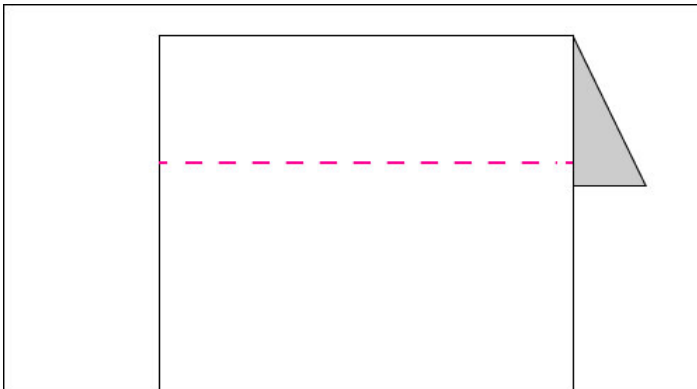


Rough Stitching

- Turn the dress, fold the armholes both panels inward and stitch on the front.



- Do the same thing for the split on the bottom.
- Fold the top of both panels about 5 or 6 cm inward to create a casing. Stitch at 4 cm from the top. Leave the sides open.



- Now you have two options: make your own band or take it easy and get a nice ribbon. In the last case, go to point 8.
 - Make your own band:
 - Cut a large band (about 140 by 10 cm)
 - Fold it with the right side inward.
 - Stitch the long side and one of the smaller sides.
 - Turn the band inside out.
 - Fold the other smaller side inward and stitch by machine or just with a few hand stitches.
- Pull the band through the tunnel, a safety pin might be useful.
<http://www.wikihow.com/Insert-a-Drawstring>
- Put the dress on and check how much it should be hemmed.
- Fold the hem, about 5 cm, and stitch on the front.

Your dress is ready!